



MAGNOLIA PLANTSCAPES

LANDSCAPES WITH CREATIVE SOLUTIONS



Saks Fifth Avenue

LIVE GREEN WALLS



PURPOSE
DESIGN
SUSTAINABILITY

- They are often used to improve air quality, reduce noise pollution, and provide aesthetic appeal in urban environments.
- The choice of plants depends on factors like the available light, climate, and desired aesthetic.
- Green Walls can be constructed using modular systems or custom-built designs.



EMBASSY SUITES LAS COLINAS, TEXAS





A close-up, top-down view of a lush, textured moss wall. The moss is a vibrant, bright green color, with some darker green patches visible on the right side. A dark green, semi-transparent horizontal band runs across the center of the image, featuring the word "MOSS" in a large, white, serif font.

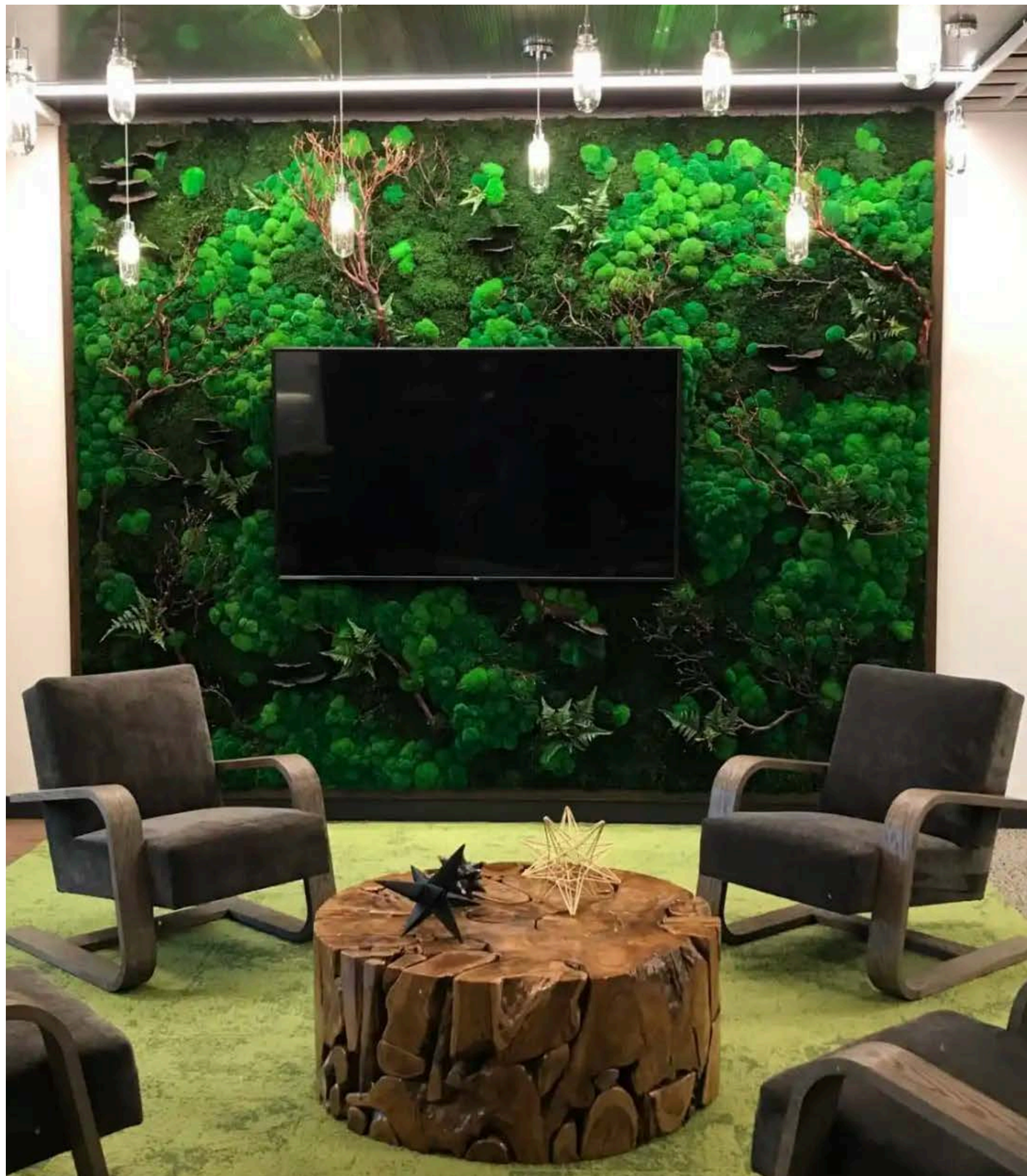
MOSS

MINIMAL UPKEEP SOUND ABSORPTION ART

- Minimal upkeep compared to live plants, as they do not need watering, pruning, or direct sunlight, making them an ideal solution for busy environments.
- Moss walls act as natural sound absorbers, helping to reduce noise levels and create a peaceful and serene atmosphere in both residential and commercial spaces.
- All moss art is unique and the design opportunities are endless.





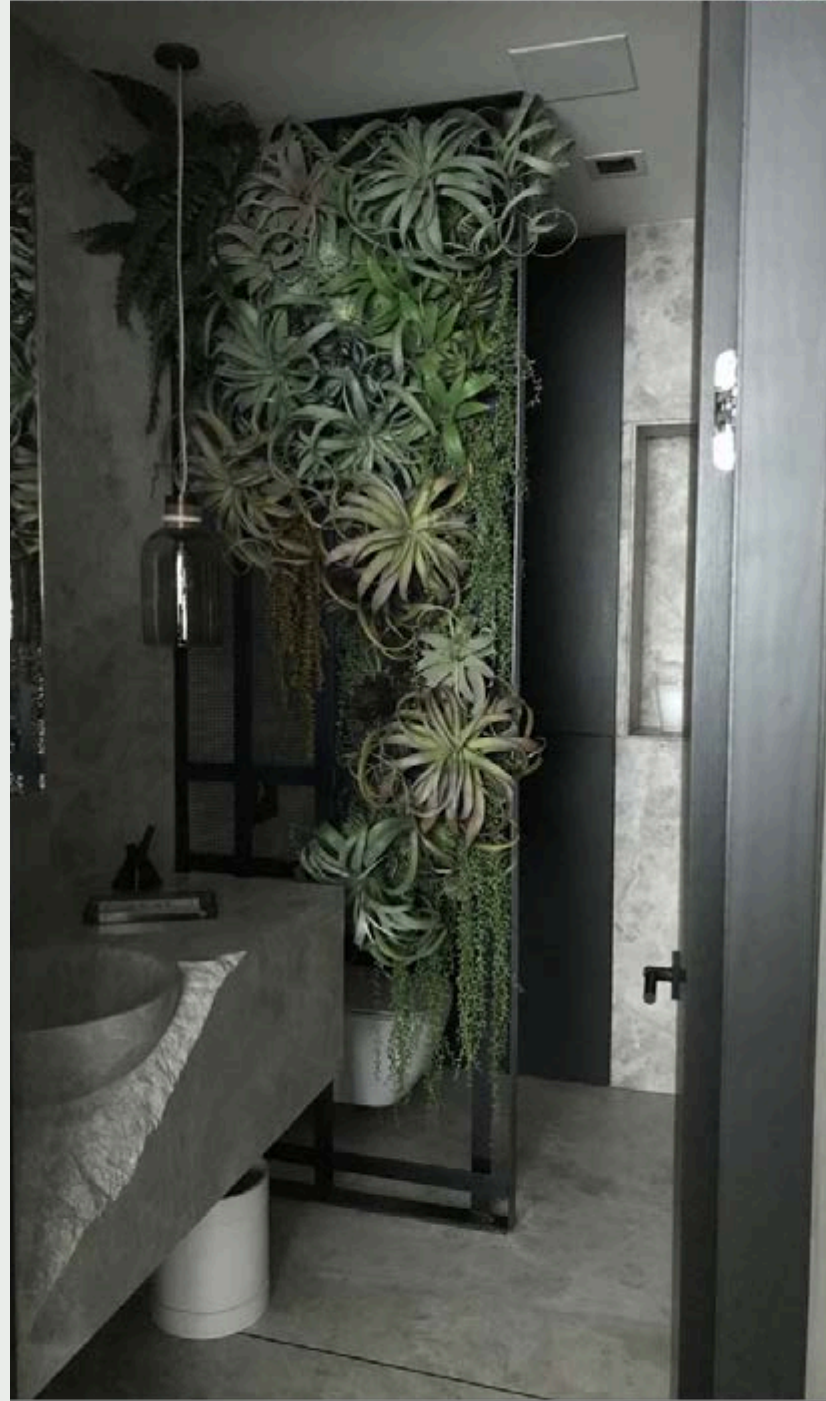




ARTIFICIAL

REALISTIC APPEARANCE
LOW MAINTENANCE
SUSTAINABLE CHOICE

- Artificial plants closely resemble real plants, blurring the lines between imitation and reality.
- They are ideal for busy individuals who appreciate greenery but lack the time for the upkeep of real plants.
- By minimizing the harvesting of real plants, artificial plants contribute to conserving natural habitats and nurturing biodiversity, aligning with contemporary environmental awareness.





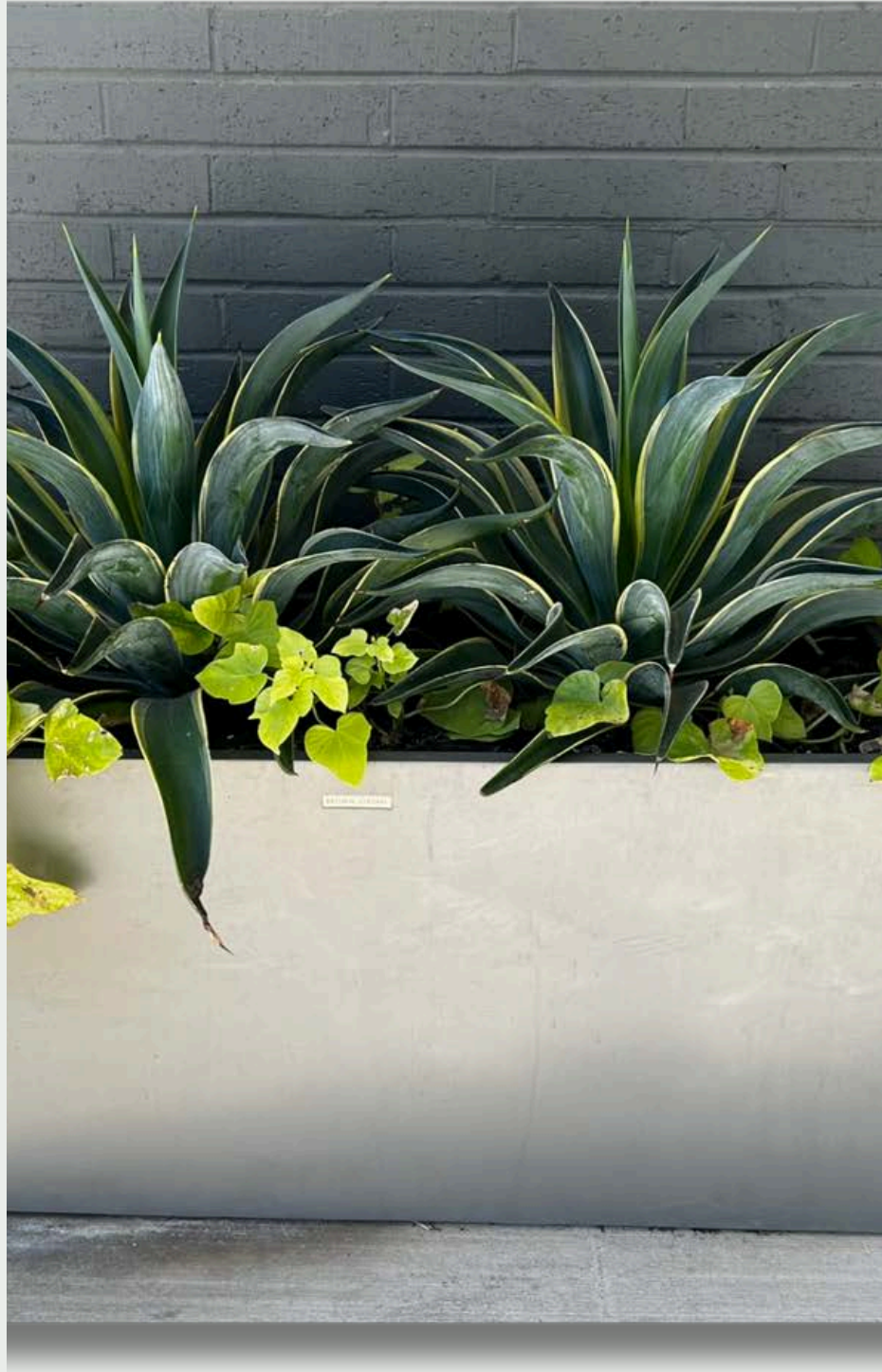




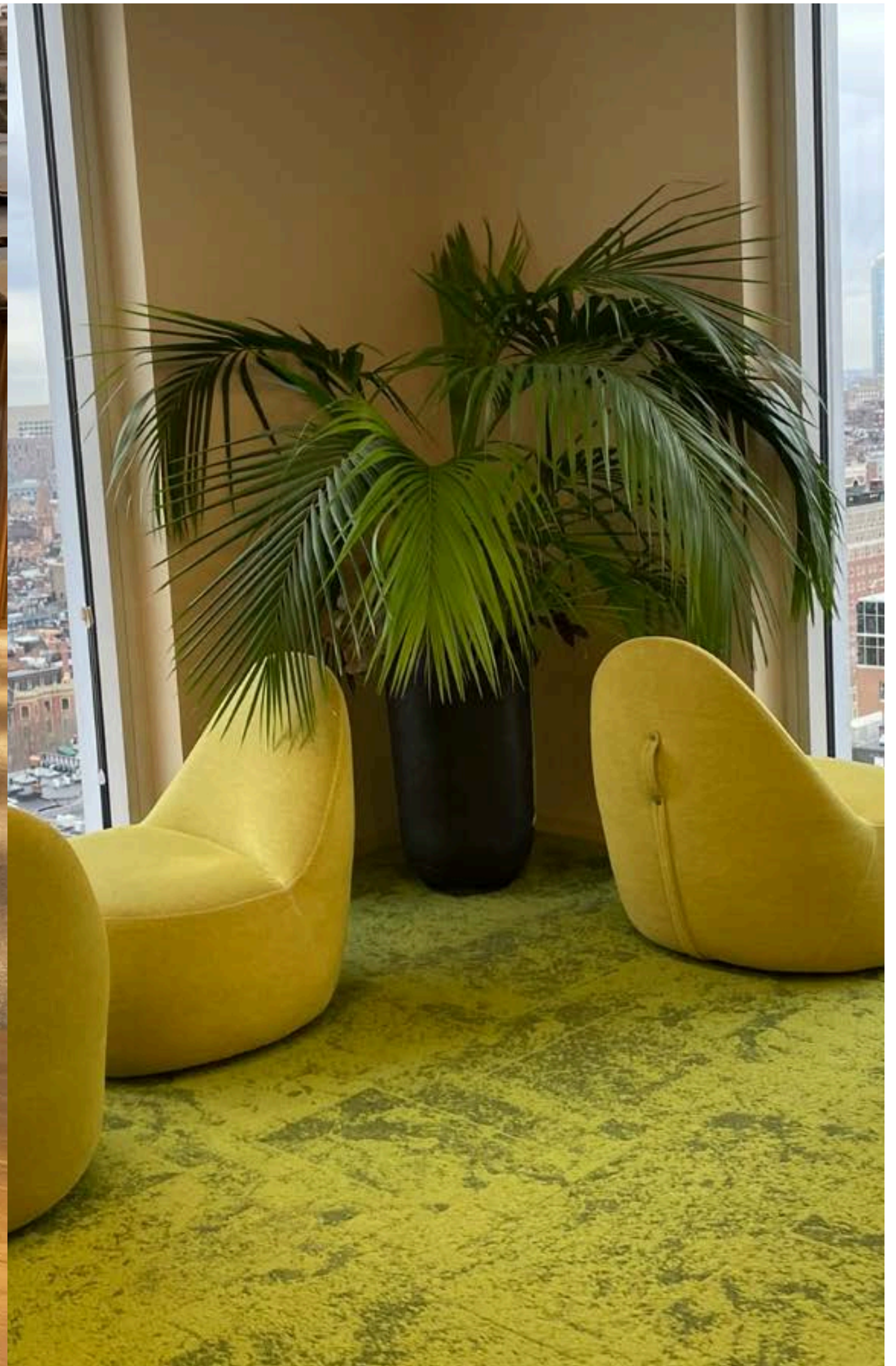
PLANT CARE & MAINTENANCE

WELL-BEING AIR QUALITY IMPROVEMENT AMBIANCE

- Plants can improve concentration and productivity, making them beneficial additions to workspaces and study areas.
- Plants can help purify indoor air by absorbing pollutants such as benzene, formaldehyde, and volatile organic compounds (VOCs).
- Proper care and maintenance of indoor plants involve understanding their specific needs for light, water, and environment.









EMAIL
INFO@MAGNOLIAPLANTSCAPES.COM

HOURS
MONDAY – SATURDAY: 8AM – 6PM

PHONE
972-291-9000

ADDRESS
500 E ARAPAHO RD
RICHARDSON, TX 75081, USA